

Labour Market Information

-Issues in Collection, Analysis and Dissemination

Nisha Arunatilake
Institute of Policy Studies of Sri Lanka
September, 2018



Labour Market

Context

Laws

Policies

Macro Env.

Business Env.

Labour Demand

Employers

Enterprises

Informal Sec.

Labour Supply

Households

Schools

VT inst.

Tertiary
Edu.

“Issues pertaining to current practices in Labour
Market Information Collection, Analysis and
Dissemination”



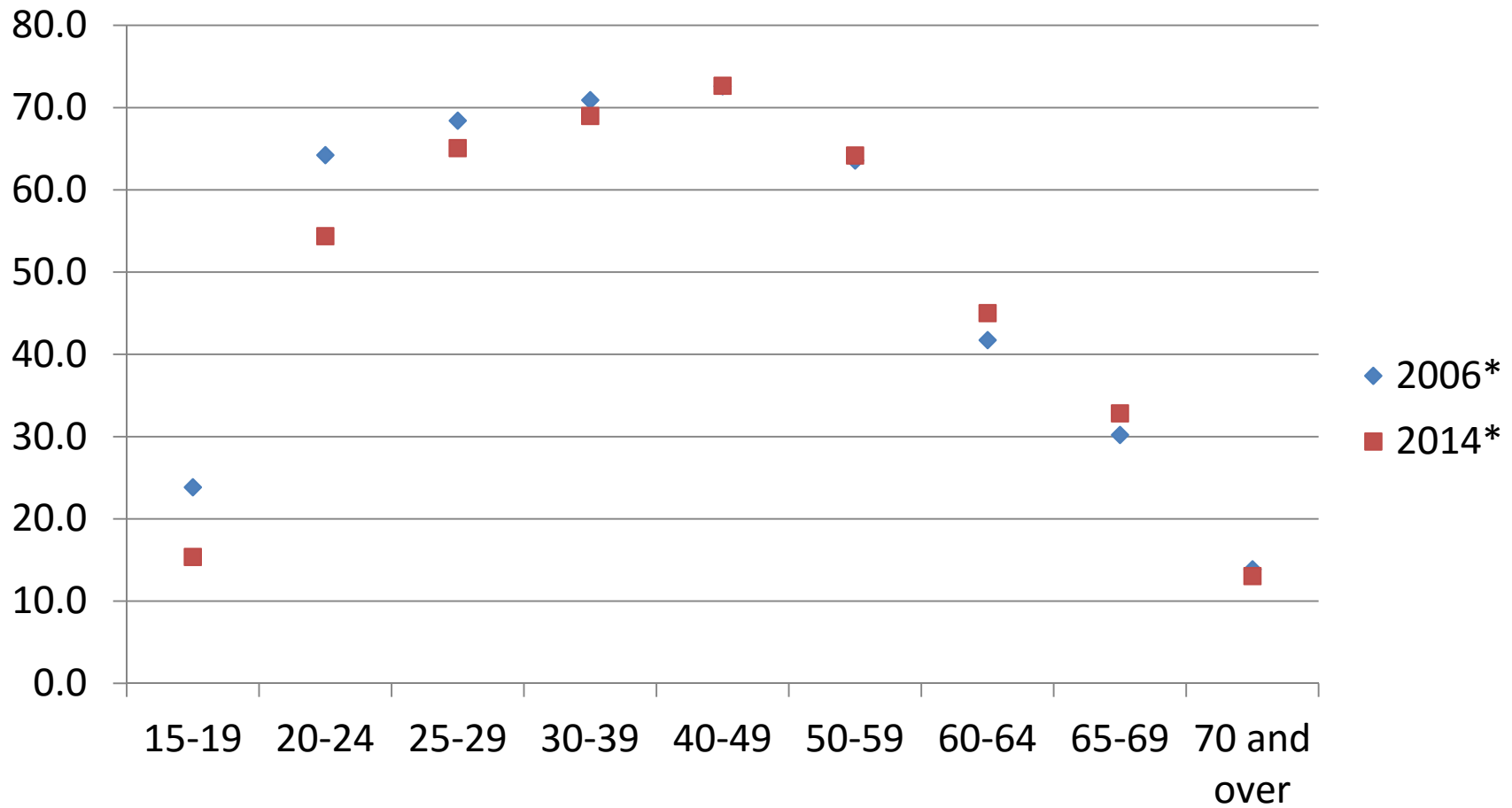
INFORMATION

INFORMATION — A LOT IS AVAILABLE

Key Indicators of Labour Market (KILM)

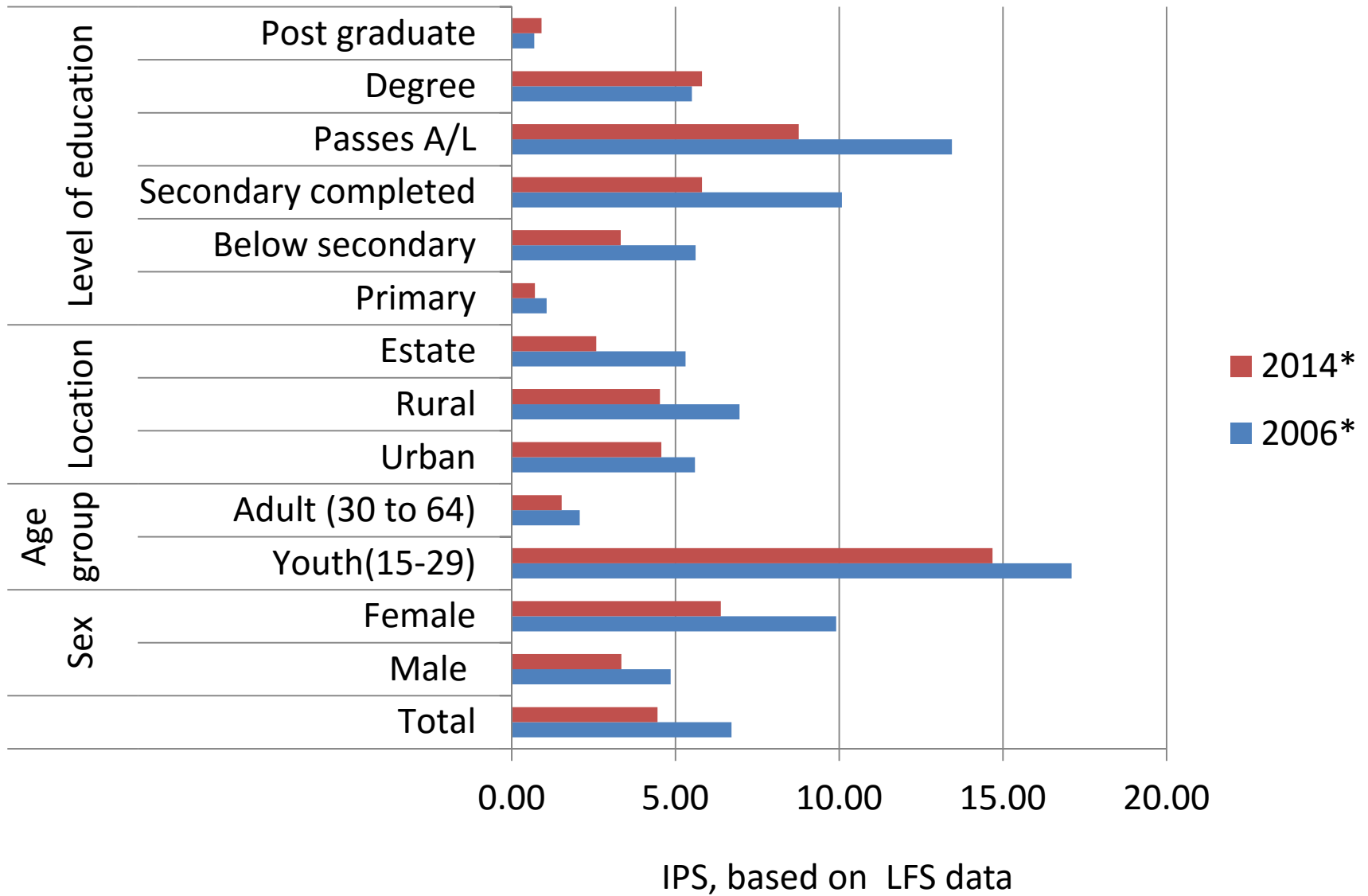
- 1. Labour force participation rate
- 3. Status in employment
- 4-5. Employment (by sector, by occupation)
- 6. Part-time workers
- 7. Hours of work
- 8. Employment in the informal economy
- 9- 11. Unemployment
- 12. Time-related underemployment
- 13. Persons outside the labour force
- 14. Educational attainment and illiteracy
- 15. Wages and compensation costs
- 16. Labour productivity
- 17. Poverty, income distribution, employment by economic class and working poverty

Labour Force Participation Rate



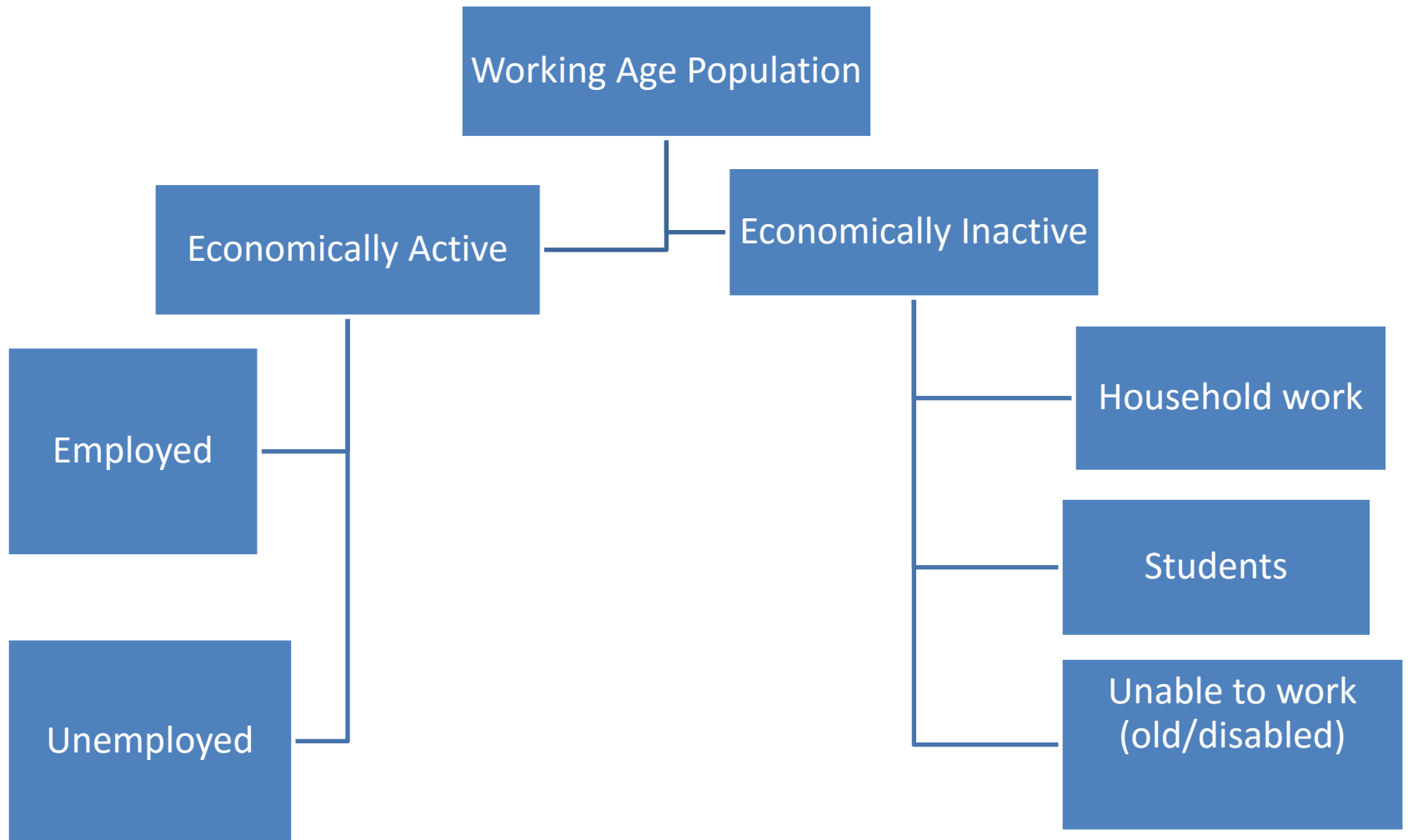
IPS, based on LFS data

Unemployment rate

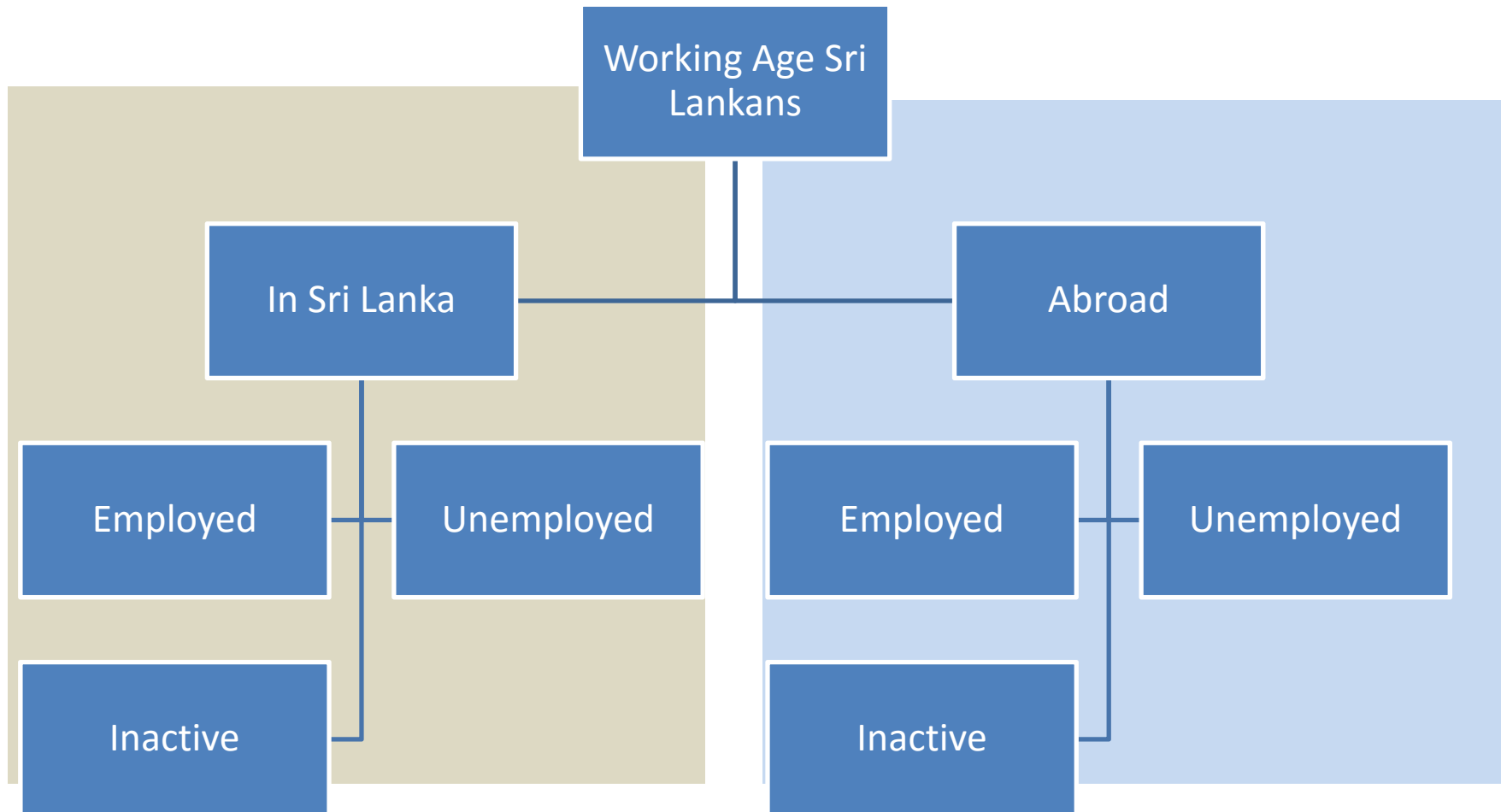


INFORMATION — BUT THERE ARE GAPS

Labour Supply- National (LFS)



Labour Supply - Global



Data Gaps

Education

- Private education not included
- Formal available, not vocational

Training institutions

- Not streamlined
- Effectiveness not known

Vacancies

- By skill levels

Migrant information

- No systematic information

Data Gaps - Education data

Question 76: What is your highest completed education level?

1. Without education
2. 1-4 grades of primary education
3. 5-7 grades of primary education
4. Primary education
5. 2 years of secondary education
6. 3 years of secondary education
7. 4 years of secondary education
8. Higher vocational education
9. Tertiary edu, faculty, academy
10. Master's degree
11. Doctorate

Question 77: What is the education field of your highest completed education level? (Macedonia LFS)

1. **000** General programmes
2. **100** Training of teachers and education science
3. **200** Humanities, languages and arts
4. **222** Foreign languages
5. **300** Social sciences, business and law
6. **400** Science, mathematics and informatics
7. **420** Life sciences (including physics, chemistry and earth science)
8. **440** Physical sciences (including physics, chemistry and earth science)
9. **460** Mathematics and statistics
10. **481** Informatics

Data Gaps - Migrant Data

Macedonia, the Moldova and the Republic of the Philippines all define 'population' to include those who are absent from the household.

Types of migrants:

- Overseas workers
- Household members of overseas workers
- Persons working as diplomats or other government officials, persons in UN organizations
- Persons who are on board ocean going vessels and their families
- Students and their families
- Persons who are receiving medical treatment and their families

Data Gaps - Returnee workers

- The LFS of Macedonia
 - Collects information on returnees working within the country by inquiring about their residence one year ago.

Data Gaps - Remittances

Questions on remittances in the Survey on Overseas Filipinos

Question 21: Did the family receive any cash remittance from _____ during the period April to September 2015?

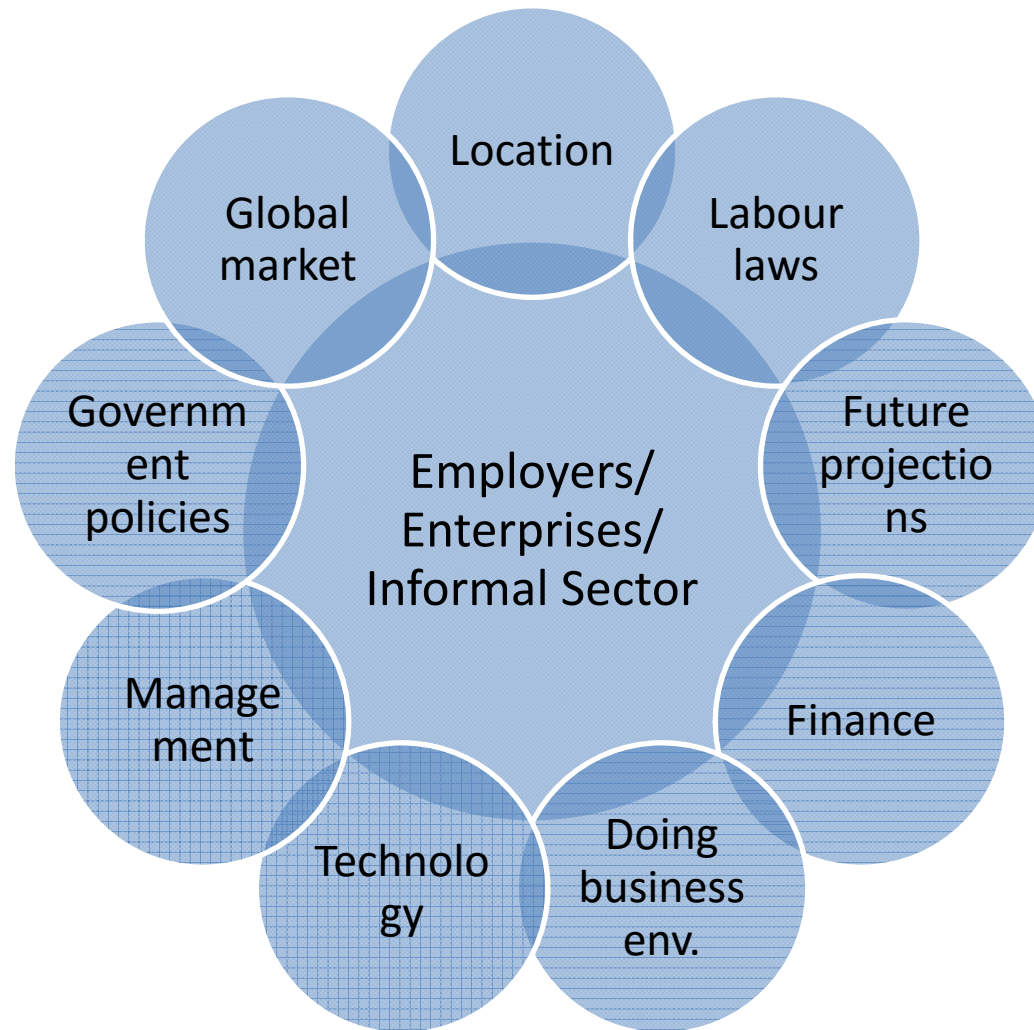
Question 23: How do you usually receive the remittance during the period April to September 2015? (e.g., Bank, Agency/ Local office, Friends, other)

Question 24: How was the remittance of _____ spent? Please provide the estimated per cent share with the following choices:
(e.g., consumptions, investments, gifts, other)

Question 25: Did _____ return during the period April to September 2015?
1 YES 2 NO, (SKIP TO Q27)

Question 26: How much cash did he/she bring home during the period April to September 2015? (ENTER AMOUNT AND CURRENCY)

Labour Demand

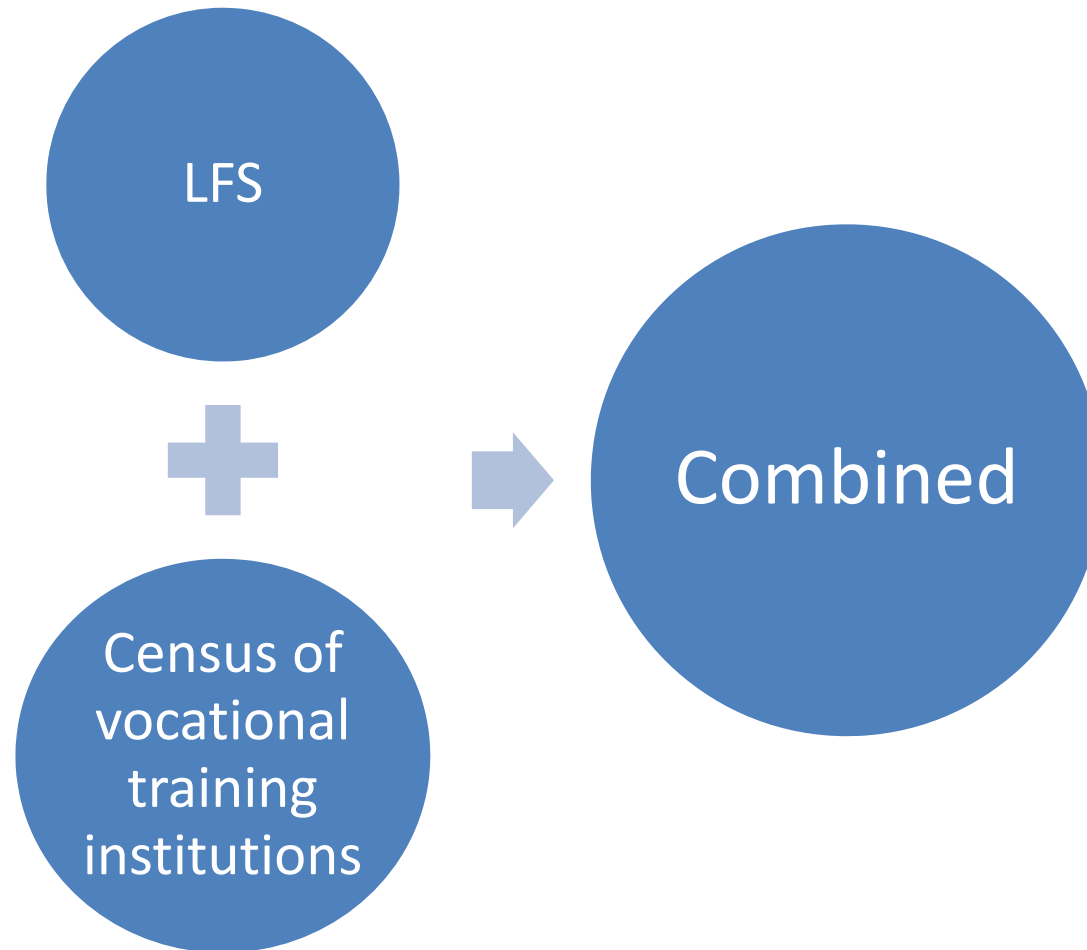


INFORMATION — USEFULNESS CAN IMPROVE

How to improve usefulness

- Needs to be timely
- Needs to be comprehensive (vocational training)
- Comparable across data sources
 - LFS, SLBFE
- Use of International classifications
 - ISCO, ISIC, ISCED
- Match data from different sources

Matching data sources



INFORMATION - SOURCES

Department of Census and Statistics

LFS

- Structured Information
- Migrants not covered, limited sample
- Skills and education data limited

Labour Demand
Survey

- Labour demand information
- Occupation codes needed
- Information on skills demanded

Census of govt. and
semi-govt. sector
employment

Department of Census and Statistics

HIES

- Employed poor; education
- Wage and earning information

Population Census

- Information on S&T workers,
- Limited access

Survey of Industries

- Some demand side information
- Industry structure

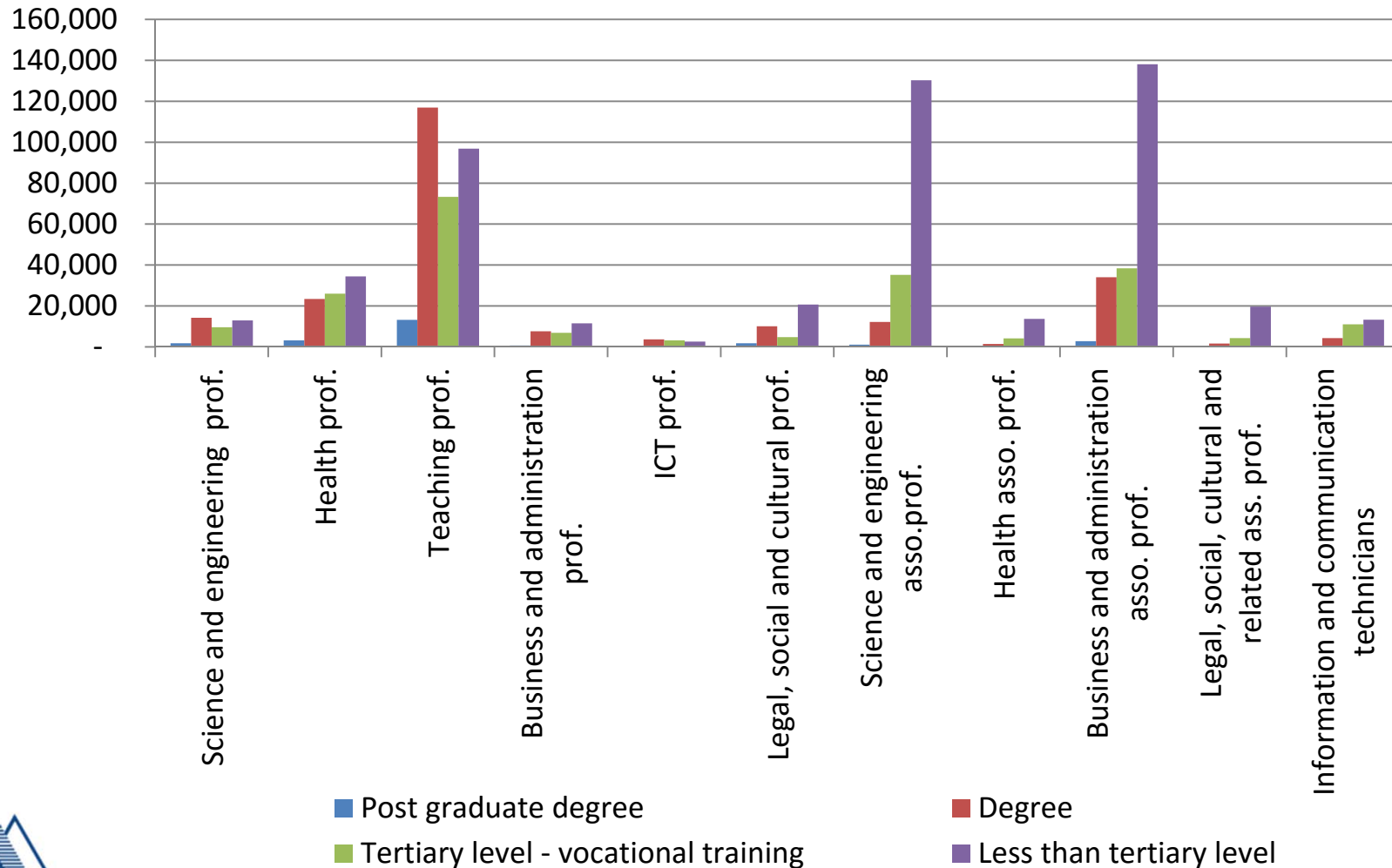
Economic Census

- Demand side information

Agriculture Census

- Detailed information on agricultural activities

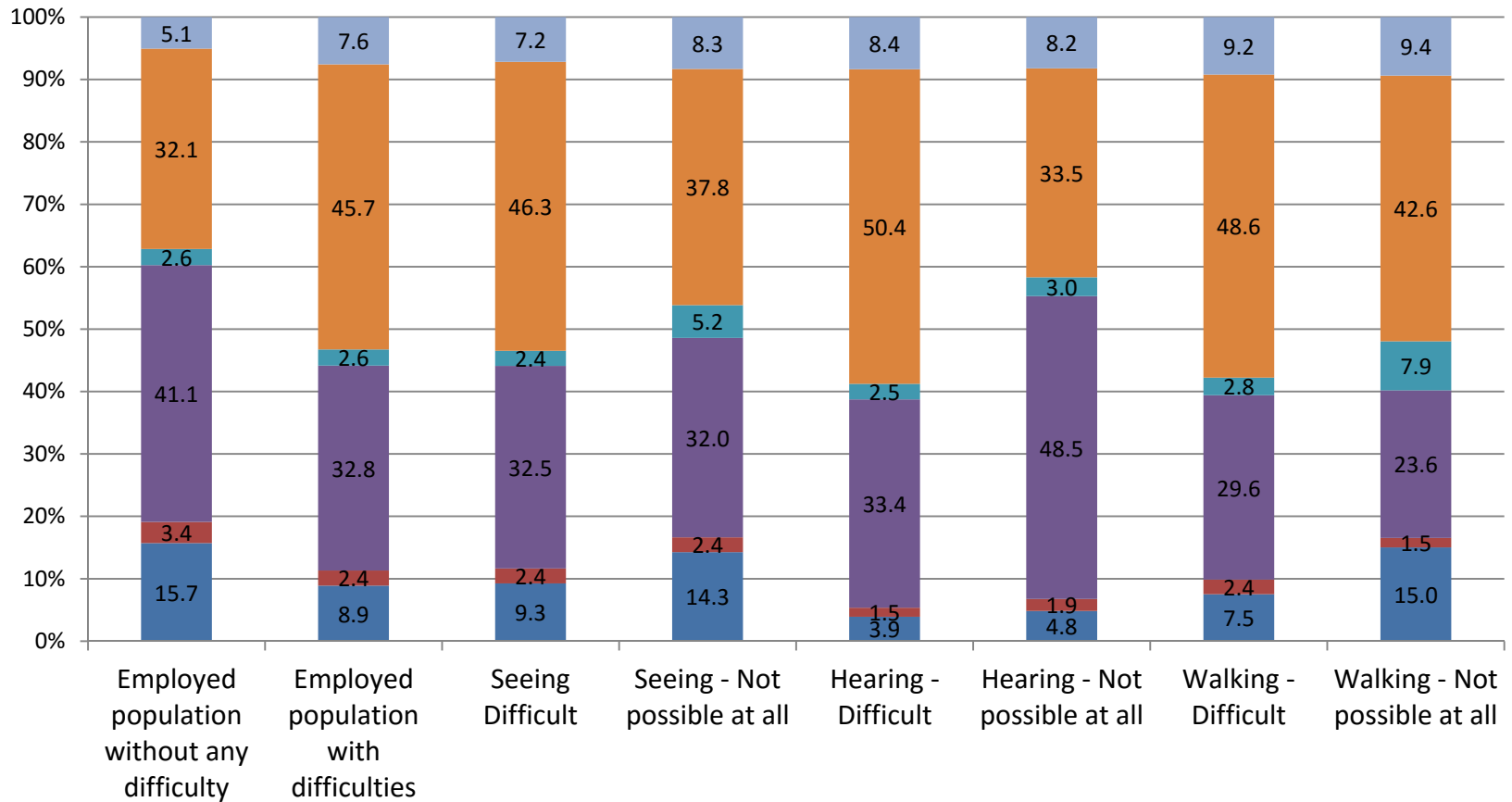
Proportion of workers without a degree was high for some categories of S&T workers



INSTITUTE OF POLICY STUDIES OF SRI LANKA

Source: IPS, DCS, Census 2012

Employed by type and level of difficulty and sector of employment



INSTITUTE OF POLICY STUDIES OF SRI LANKA

- Unpaid family worker
- Own account worker
- Employer
- Private sector employee
- Semi Government employee
- Government employee



Source: IPS, DCS, Census 2012



Other Sources

Migrant workers
(SLBFE)

- Not aligned with LFS
- Administrative data – not comprehensive

Migrant workers
(Big data, Customs)

- Data not available

Workers in industrial
zones (BOI)

- Limited access to data
- Information not systematically collected

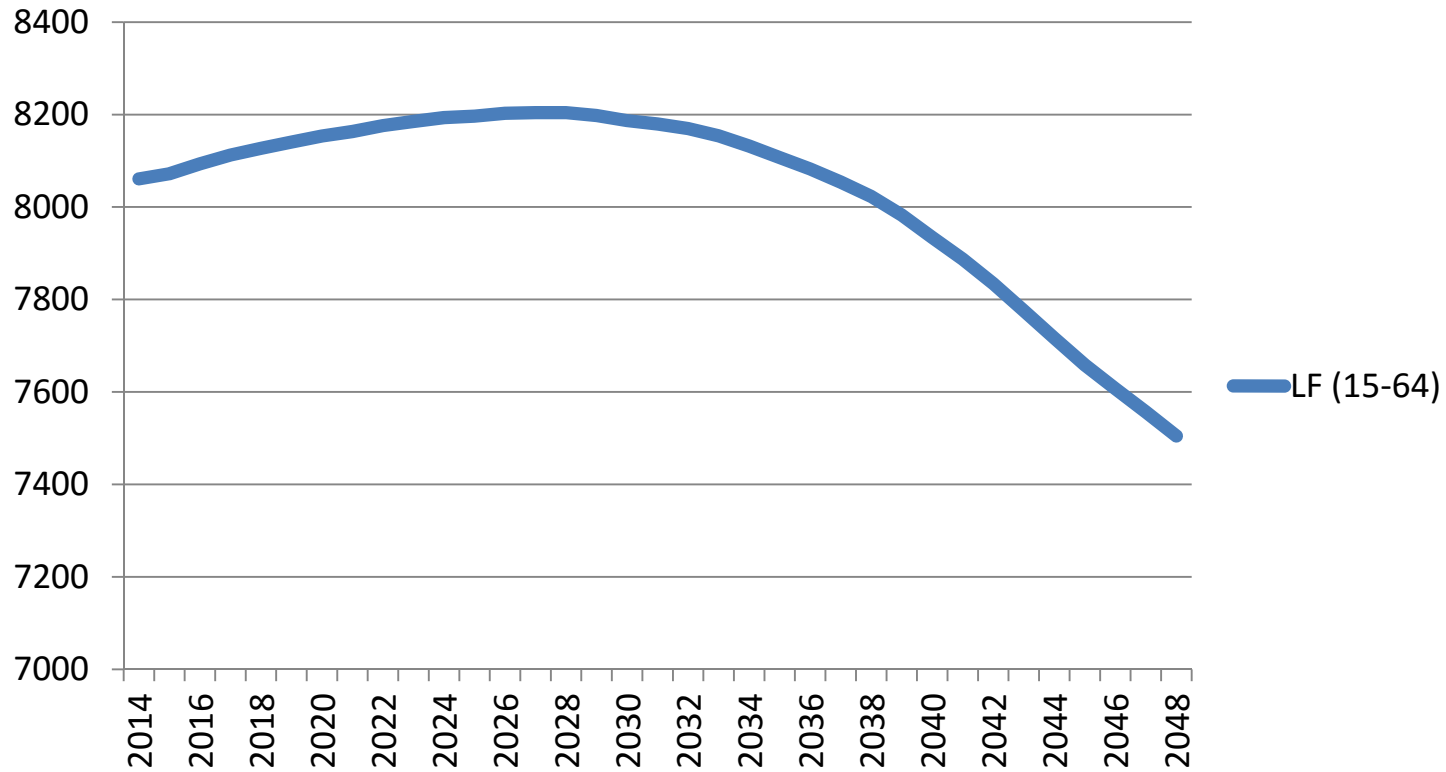
Industrial
Organizations

- Ad hoc
- Labour shortages by skill levels

ANALYSIS

ANALYSIS - LABOUR FORCE TRENDS

Labour force trends

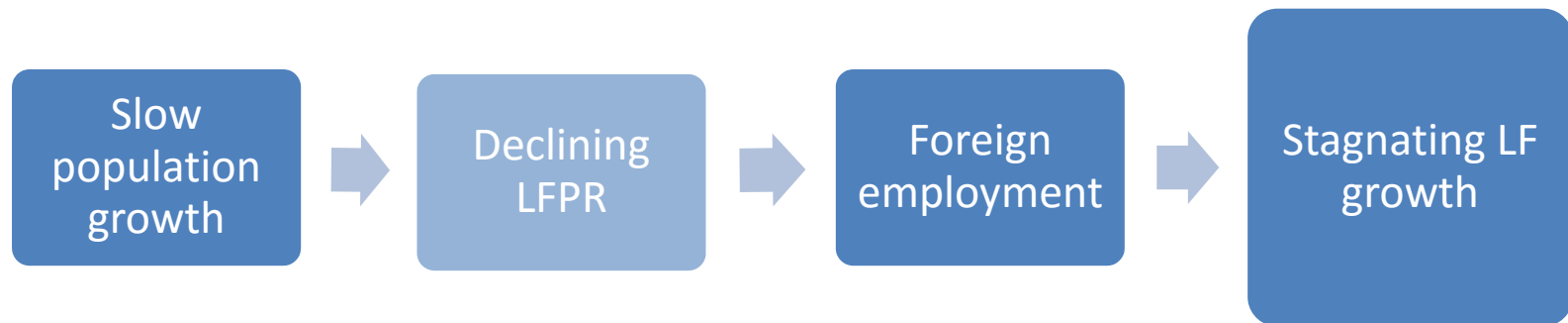


INSTITUTE OF POLICY STUDIES OF SRI LANKA

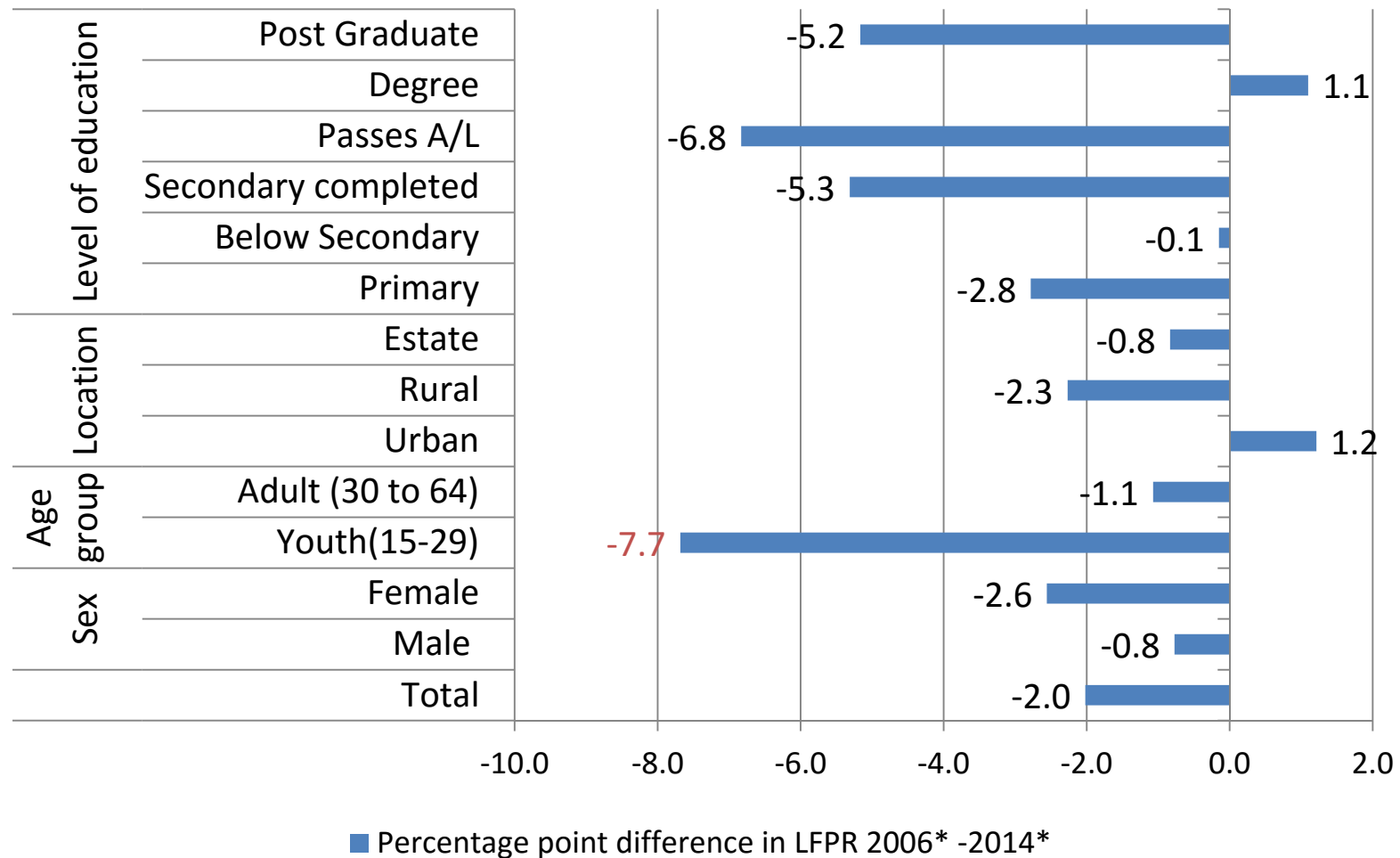
IPS, based on Census 2012 and LFS data



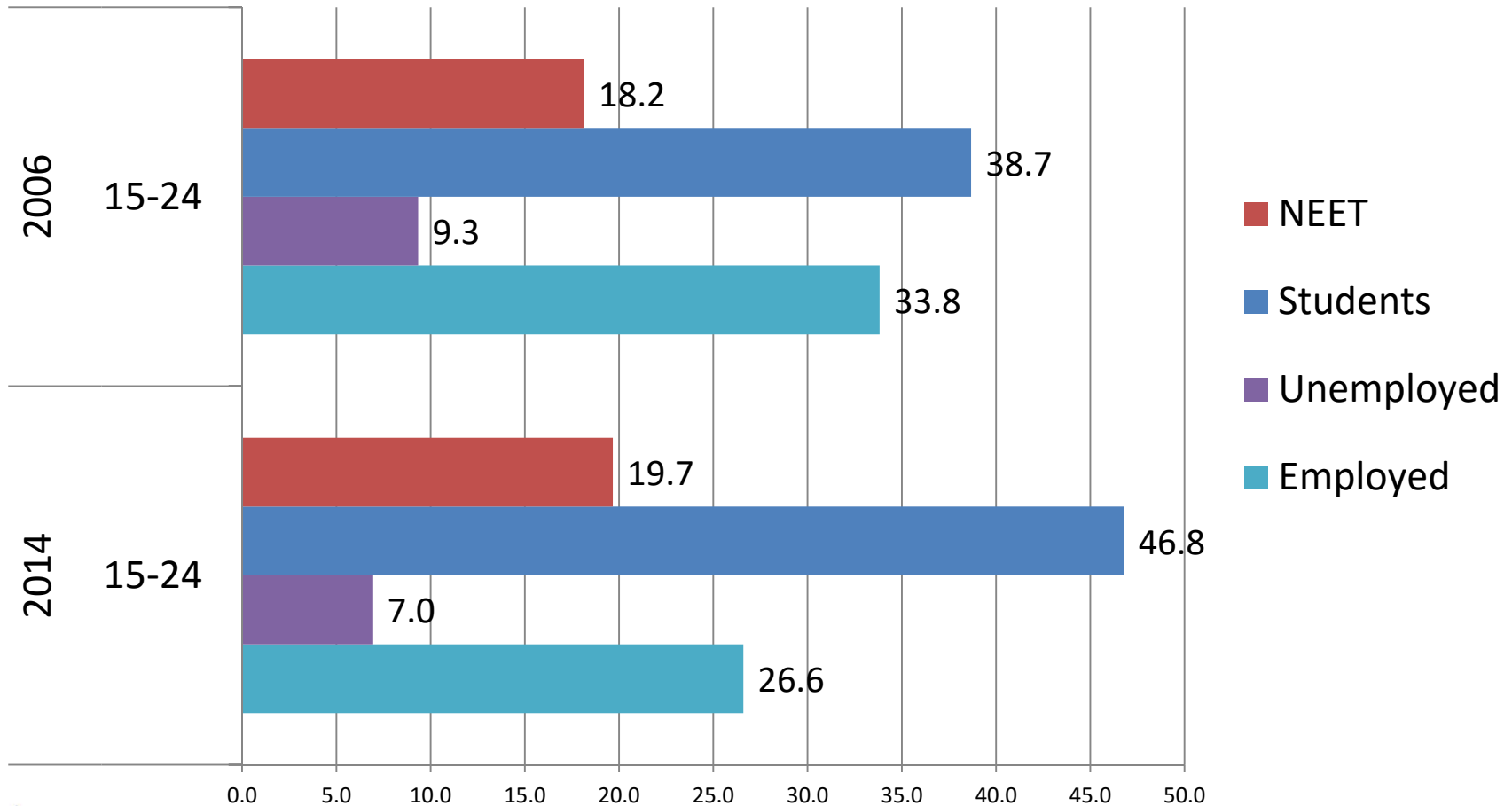
Main finding: Sustaining labour supply is a challenge...



Percentage point difference in LFPR 2006-2014

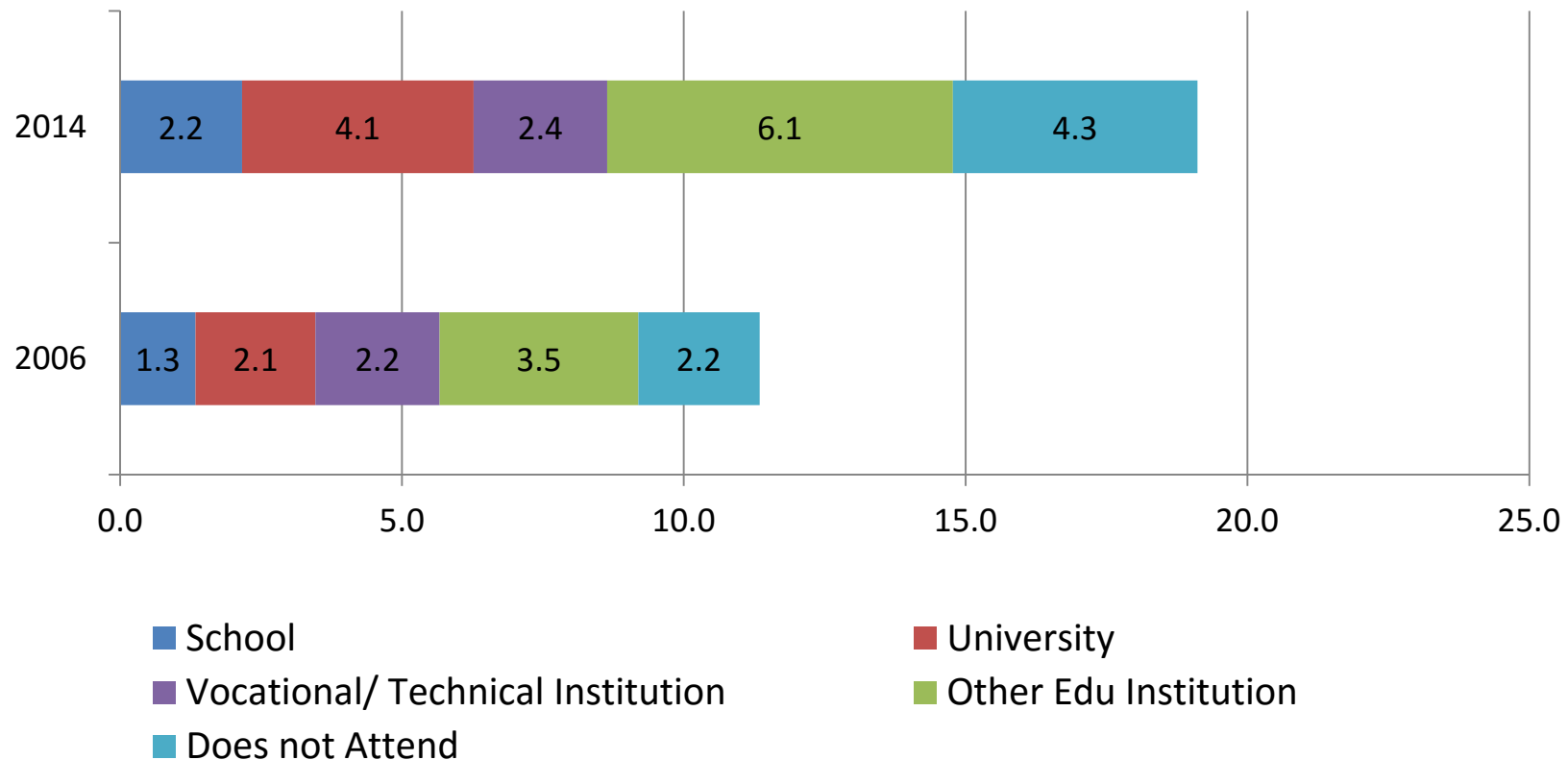


Why youth participation has dropped?



But education participation is not at the tertiary level

20-24 year olds

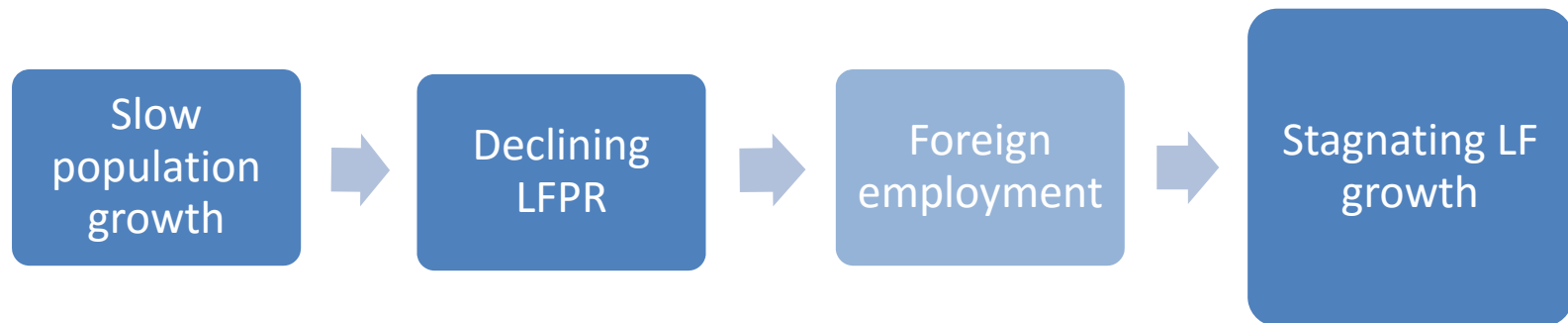


INSTITUTE OF POLICY STUDIES OF SRI LANKA

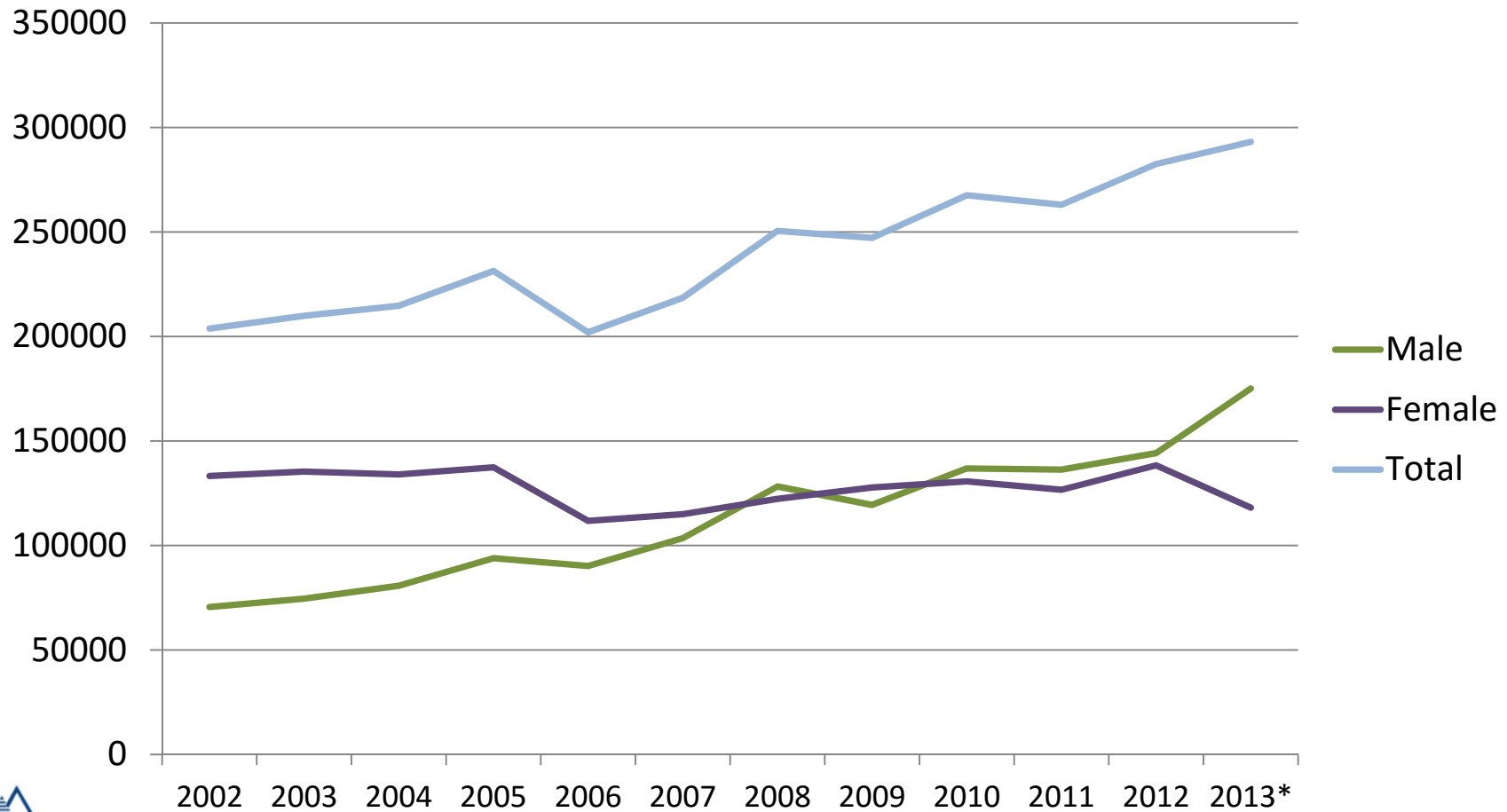
IPS, based on LFS data



Main finding: Sustaining labour supply is a challenge...



Departures for foreign employment, by gender



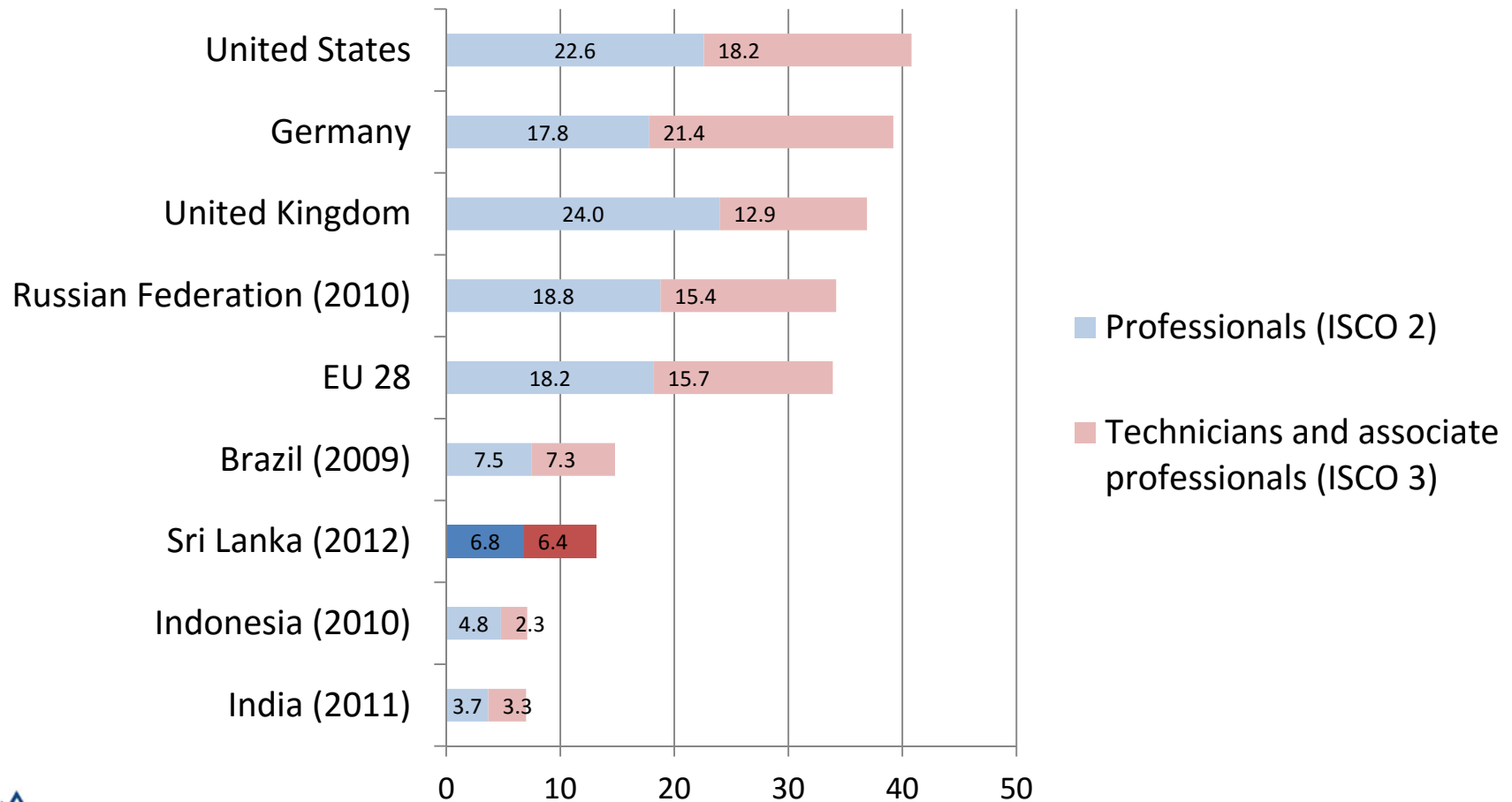
INSTITUTE OF POLICY STUDIES OF SRI LANKA

Source: IPS, SLBFE data



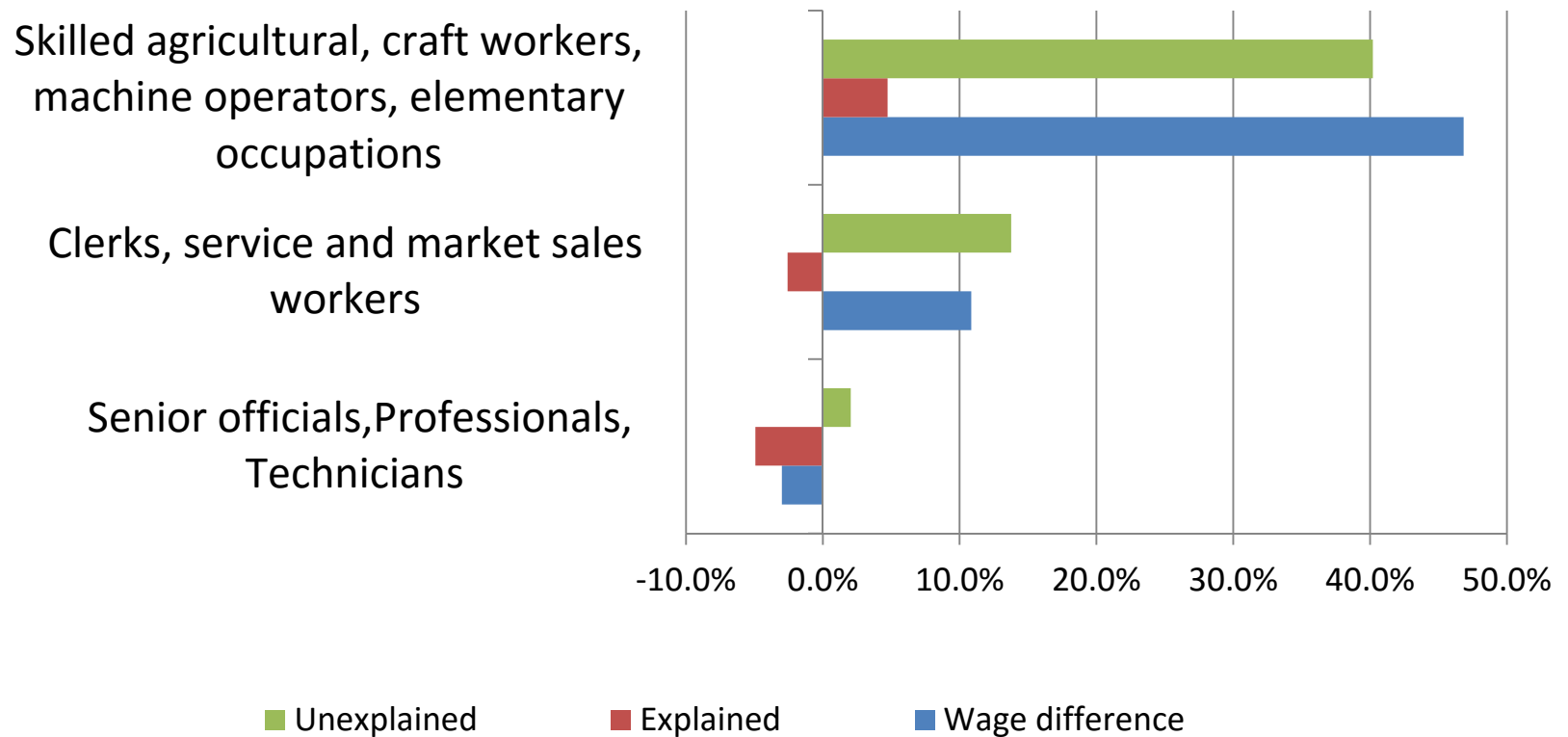
ANALYSIS – KNOWLEDGE BASE WORKERS

Proportion of employed in high skilled occupations (%)



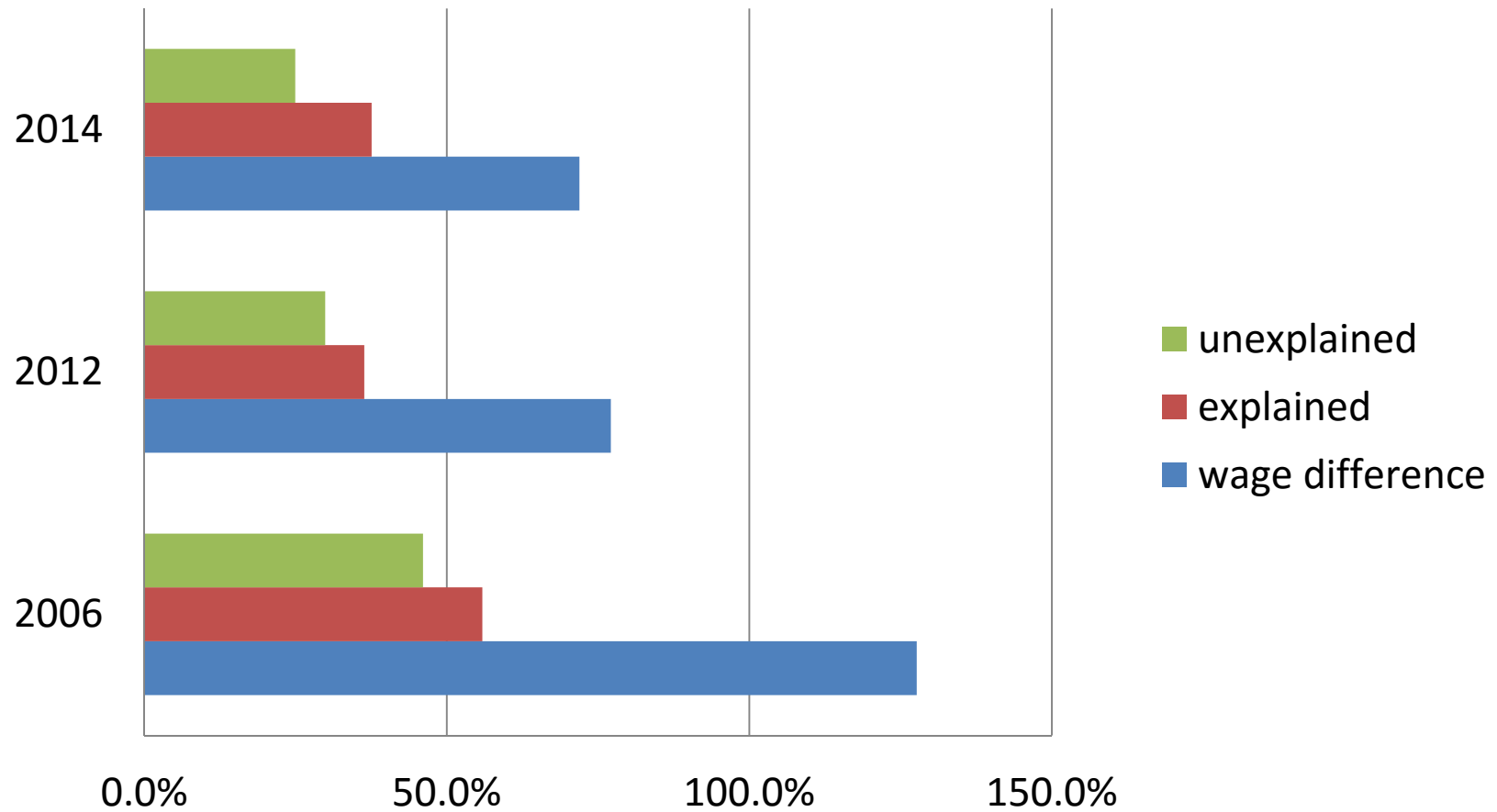
ANALYSIS – WAGE GAP

Wage Gap (Male vs. Female)



Source: IPS, LFS

Hourly Wage Difference: Public vs. Private



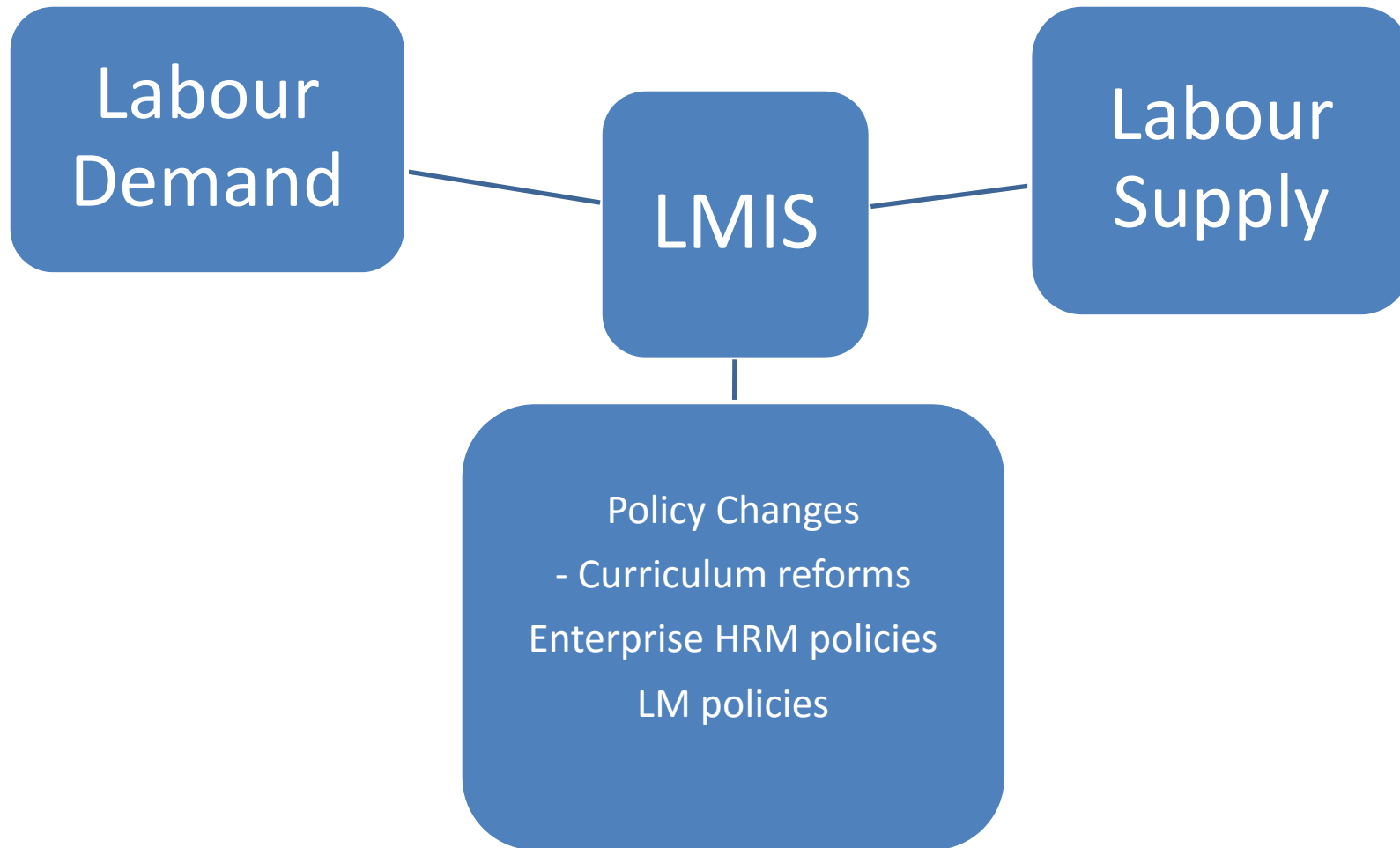
Source: IPS, LFS

DISSEMINATION

DCS Analysis

- Reports
- Website
- Researchers
- Ministries

Needs to be strategic



Information

A lot available

But still gaps

Streamlining can
improve usage of
data

Access needs to
improve

Analysis

Time series analysis
available on KILM

But, needs to change
with time

More advance
analysis needs to be
done

Funding for analysis
of data

Dissemination

Knowledge is
scattered

Needs to be strategic
and policy oriented

Labour Market
Bulletin



Institute of Policy Studies of Sri Lanka

100/2 Independence Avenue,

Colombo 7, Sri Lanka

T: +94 11 2143100

www.ips.lk

 www.ips.lk/talkingeconomics

 [/instituteofpolicystudies](https://www.facebook.com/instituteofpolicystudies)

 [@TalkEconomicsSL](https://twitter.com/TalkEconomicsSL)