

Overview of affected livelihoods post tsunami

presented by
Income Recovery Technical Assistance Programme
(ITRAP) of ILO



Contents

1. Facts figures on Livelihoods affected
2. Income Recovery Programme
 - Cash Transfers/ Social Protection
 - Cash for Work/ Temporary Employment Generation
 - Economic Recovery/ Local Economic Development
3. Livelihood Status
 - Cash Transfers/ Social Protection
 - Cash for Work/ Temporary Employment Generation
 - Economic Recovery/ Local Economic Development

Facts & figures on Livelihoods affected

Overview

	Total	Affected
■ Provinces	9	5
■ Districts	25	13
■ DS Divisions	327	54
■ GN Divisions	14,000	767

Estimated 150,000 persons lost their livelihoods

Estimated 800,000 persons affected by Tsunami

Facts & figures on Livelihoods affected

What is livelihood?

A livelihood comprises the capabilities, assets (stores, resources, claims and access) and activities required for a means of living.

Examples...

	Fisheries	Tourism	Other Businesses
Formal Sector	<ul style="list-style-type: none"> ■ Nets ■ Boats 	<ul style="list-style-type: none"> ■ Guest house ■ Hotels ■ Water sports ■ Restaurant equipment 	<ul style="list-style-type: none"> ■ Shops ■ Office equipment (IT) ■ Furniture ■ Entertainment
Informal Sector	<ul style="list-style-type: none"> ■ Canoe ■ Small scale processing 	<ul style="list-style-type: none"> ■ Gift shops ■ Transport (tuck, luck, taxi) 	<ul style="list-style-type: none"> ■ Coir ■ Sewing ■ Lace ■ Bakery ■ Food stalls

Facts & figures on Livelihoods affected

Fisheries

- 24,185 destroyed or damaged
- About 21,656 boats restored
- Approximately +54,000 employments affected

Agriculture

- 11,657 acres destroyed or damaged
- Approx. 80% restored

Tourism

- Approximately 420 enterprises have been damaged, 84% are SMEs
- Approximately 27,000 employments have been lost, 38% are SMEs
- 53 large hotels damaged: approx. 60% restored
- 90 Small hotels, guesthouses damaged or destroyed: approx. 45% restored

Small enterprises/ Informal sector

- 87% of households suffered loss or damage to their privately owned productive assets
- 14,000 people obtained microfinance loan from Su-Sahana scheme or NDTF
 - Total disbursed of Rs.3.7B

Facts & figures on Livelihoods affected

Near 11,000 business units have been damaged by Tsunami

Provisional estimates from Department of Census and Statistics

Number of affected units damaged (excluding housing)	Northern Province		Southern Province		Eastern province			Western Province			NW			
	Jaffna	Mullaitivu	Kilinochchi ¹	Galle	Matara	Hambantota	Ampara	Batticaloa	Trincomalee	Colombo	Gampaha	Kalutara	Puttalam	
Total	4745	76	135	1	1807	715	272	864	405	184	98	10	360	2
Other services	1434	49	94	1	978	337	0	108	104	44	48	1	83	
Other	1101	8	10	0	260	138	38	286	71	22	184	30	83	
Other production industries	84	0	17	0	0	0	0	36	24	22	0	0	0	0
Other fisheries industries	718	0	0	0	278	115	45	118	28	28	24	17	59	0
Trading	847	8	37	0	268	78	48	92	61	34	0	1	36	0
Hotels/Restaurants	550	0	34	0	22	48	42	202	47	107	21	30	10	0
Agriculture/Animal Husbandary	495	0	0	0	150	70	32	33	14	11	8	0	49	3
Coal Manufacturing	318	0	0	0	141	28	37	8	18	7	17	0	33	0
Small production	99	0	0	0	41	24	8	7	0	16	0	0	3	0
Tourist hotels	58	0	0	0	0	0	0	2	26	19	2	0	1	0
Beach houses/Cabanas/Guest houses	46	0	0	0	33	8	4	0	0	0	0	0	1	0
Net services	9	0	0	0	0	0	0	0	0	0	0	0	0	0
Total	10981	131	326	2	3421	1694	593	2165	683	682	423	98	719	5

Source: Department of Census and Statistics
¹ Provisional

Facts & figures on Livelihoods affected

Estimated Damage to the Livelihood Sector (\$ 1,000)

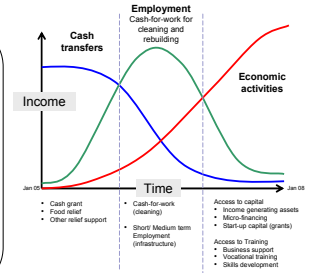
Province	Total	% of Grand Total	Fisheries	Guest Houses	Small Business	Own Account Workers
Northern	22,703	16.2	17,516	0	2,031	3,156
Eastern	44,850	32.0	23,664	941	8,959	11,286
Southern	38,340	27.4	18,017	14,031	3,191	3,101
Western	26,135	18.6	16,470	4,628	2,601	2,436
North-Western	8,154	5.8	8,105	0	29	21
Grand Total	140,182	100.0	83,772	19,600	16,811	20,000
Percent	100.0	100.0	59.8	14.0	12.0	14.3

Livelihoods Recovery Strategy

Reviving Tsunami-affected local economies to rebuild sustainable jobs and livelihoods to move people out of poverty and dependency as soon as possible

Three components:

- > **Social Protection** [temporary cash and food benefits and Long term social assistance for disabled in the disaster, widowers, orphans and elderly persons]
- > **Temporary Employment Generation** [work on community and public infrastructure development and associated training]
- > **Rebuilding local economic activities** [facilitating access to finance and other services such as capital, loans, income generating assets, grants, capacity and skills training and sector growth]



Livelihood Status

(a) Cash Transfers/ Social Protection

Cash transfers of Rs. 5,000

- 1st payment – 250,844 families
- 2nd payment – 231,752 families
- 3rd payment – 165,000 families
- 4th payment – In progress (same as 3rd tranche)
- Total value disbursed: Rs.3.3billion

Cash transfers of Rs.375 (200 in cash and 175 in kind)

- 800,000 individuals (3 years old and above)
- Total value: Rs.4.5billion

Vulnerable group:

Number of persons disabled/injured/sick due to Tsunami : 21,151

Source: Department of Census and Statistics

Livelihood Status

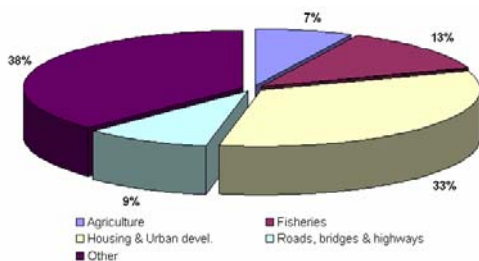
(b) Temporary Employment/ Cash for work

- At least Rs.700 million spent on cash for work programs
- At least 122 cash for work activities are on-going or planned
- Cash for work guidelines published:
 - Labour guidelines in collaboration with the Ministry of Labour
 - Engineering and Procurement guidelines in collaboration with ICTAD
- Cash for work projects identified
 - Batticaloa: 44
 - Galle: 16
 - Killinocchi: 12
 - Matara: 6
 - Kalutara: 16

Livelihood Status

b) Cash for work

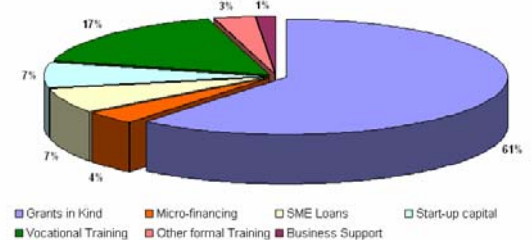
Cash For Work Activities per Sector



Livelihood Status

Activities in economic recovery

Instrument 3 activities in 7 tsunami-affected districts, by no. of programmes involved



Livelihood Status

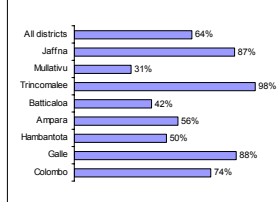
Job losses and recovery rate

60% have recovered some source of income
ILO Survey, April 2005

Jobs loss and recovery rates by sex	Men	Women	Total
Job losses rate*	86%	87%	86%
Job recovery rate in same sector**	55%	39%	50%
Lost and did not recover**	36%	52%	41%

*As share of working respondents
**As share of those who lost their job

Individuals working by district (April 2005)



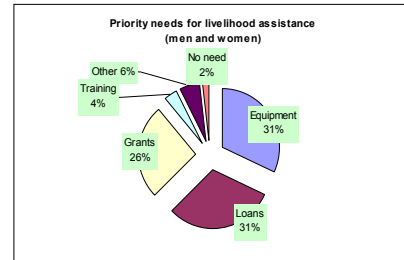
Source: ILO survey, April 2005

Livelihood Status

(c) Economic Recovery (continued)

Answer to the question:

"What assistance would help you earn a better income in the future?"



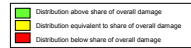
Source: ILO survey, April 2005

Appendix

(b) Economic Recovery – Agriculture and Fisheries Details

FISHERIES

Replacement/ Restoration of boats



Boat type	No. Destroyed	No. Replaced	% Replaced	No. Damaged	No. Repaired	% Repaired	Total Affected	Total restored	% Recovered
Multi-day boats	187	0	0%	676	791	117%	863	791	92%
One day boats	276	1	0%	783	794	101%	1099	811	77%
FRP boats	4480	3722	83%	3211	4065	127%	7691	7787	101%
Traditional crafts	11158	8443	76%	2435	3523	145%	13593	11966	88%
Beach seine crafts	818	211	26%	1611	90	6%	979	301	31%
Total	16919	12393	73%	7268	9263	127%	24188	21656	90%

Source: FAO, October 2005

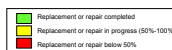
AGRICULTURE

Distribution of seed packets

Districts	Acres	% of total	Total	% of total	Difference*
Colubara	490	4%	490	3%	1%
Galle	413	4%	2910	15%	11%
Matara	357	3%	1660	9%	7%
Hambantota	1,161	11%	2093	11%	0%
Ampara	6,172	56%	4749	25%	-31%
Trincomalee	465	4%	2895	15%	11%
Batticaloa	189	2%	2774	14%	12%
Mullativu	2,025	18%	1100	6%	-12%
Jaffna	290	3%	590	3%	0%
Total	11,002	100%	18,186	100%	0%

Source: Ministry of Agriculture and FAO, October 2005

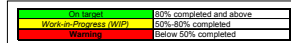
* Illustrative only - does not consider number of people covered from packet distribution



Economic Recovery – Fisheries Details

FISHERIES

Replacement/ Restoration of boats



Fisheries - Destroyed	# Destroyed	% Restored	Constraints
Multi-day boats	187	0%	Funding availability and delays at boat yards.
One day boats	276	6%	
FRP boats	4480	83%	Lack of fishing gears and engines.
Traditional crafts	11158	76%	
Beach seine crafts	818	26%	Funding availability.
Total	16919		

Fisheries - Damaged	# Damaged	% Repaired	Constraints
Multi-day boats	676	118%	Excess in repair of boats (>100%) is due to repair of boats damaged before the tsunami in addition to tsunami damaged boats.
One day boats	783	105%	
FRP boats	3211	133%	
Traditional crafts	2435	146%	
Beach seine crafts	161	66%	Repaired data may have got included under traditional crafts as there is excess repairs in all other categories.
Total	7268		

AGRICULTURE

Land recovery and Distribution of seed packets

Agriculture	Destroyed	% Restored	Constraints
Area covered through distribution of seeds and fertilizers	11,657 Hectares	80%	Tracking of acres recovered not possible due to lack of funds
Destroyed/damaged home gardens provided with inputs	27,710	82%	Funding availability
Estimated area recovered from salinity (data not yet available)	17,500 acres	70%	Funding availability and technical challenges

Districts	Acres	% of total	Total	% of total	Difference*
Colubara	490	4%	490	3%	1%
Galle	413	4%	2910	15%	11%
Matara	357	3%	1660	9%	7%
Hambantota	1,161	11%	2093	11%	0%
Ampara	6,172	56%	4749	25%	-31%
Trincomalee	465	4%	2895	15%	11%
Batticaloa	189	2%	2774	14%	12%
Mullativu	2,025	18%	1100	6%	-12%
Jaffna	290	3%	590	3%	0%
Total	11,002	100%	18,186	100%	0%

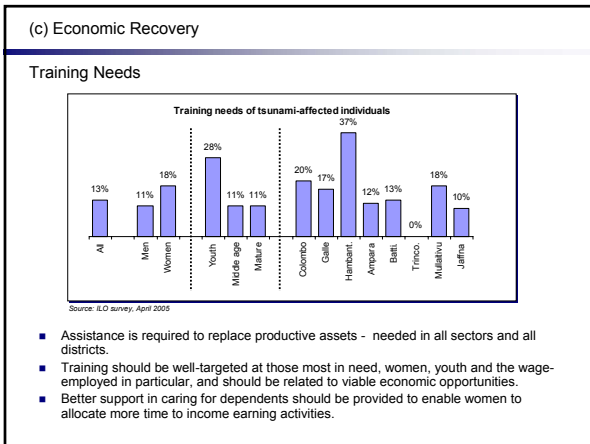
Source: Ministry of Agriculture and FAO, October 2005

* Illustrative only - does not consider number of people covered from packet distribution

Tourism	Destroyed	% Restored	Constraints
Large Hotels (30 or more rooms)	43	60%	Delays in obtaining Coast Conservation Dept. clearance and bank loans
Small hotels, guesthouses - Registered	80	45%	
Small enterprises such as textile shops, souvenir shops, Batik shops, furniture shops, gem & jewellery, water sports	20	30%	
Small enterprises such as textile shops, souvenir shops, Batik shops, furniture shops, gem & jewellery, water sports Not Registered	190		

Affected housing units

Number of affected units damaged (excluding housing)	Northern Province			Southern Province		Eastern province		Western Province		NW			
	Jaffna*	Mullaithivu	Kilinochchi*	Galle	Matara	Hambantota	Ampara	Batticaloa	Tinnovali	Colombo	Gampaha	Kalutara	Puttalam
Trade	4745	76	136	1	1607	715	272	884	405	184	95	10	363
Other services	1434	40	95	1	573	337	0	108	104	44	48	1	83
Other	1101	5	11	0	261	139	39	258	71	22	102	37	83
Other production industries	851	1	17	0	8	81	362	123	225	27	9	5	6
Other services industries	716	1	18	0	278	118	48	118	26	28	22	17	58
Finance	647	6	37	263	79	42	30	91	34	3	1	35	0
Hotels/Restaurants	550	2	30	22	40	42	200	47	107	21	30	10	1
Manufacturing/Industrial/Handicraft	409				150	19	32	74	11	6	1	4	6
Govt. Manufacturing	318				111	59	37	3	15	7	17	17	33
Home production	99				41	24	6	7	0	18	0	0	3
Student homes	55				3	3	2	26	14	2	1	0	1
Rep. houses/Colonnades/Hotel houses	45				33	3	4	1	1	1	0	0	1
Not specified	9				7	2							
Total	16981	131	326	2	3421	1684	593	2105	883	682	423	96	719



Livelihood Status

(c) Economic Recovery – Livelihood assistance (I/NGOS)

Data collection process conducted from July to September :

- 100 I/NGOs contacted across seven districts
- 1,000 Livelihood projects identified in seven affected districts
- Total of 231,525 Beneficiaries***

Distribution of I/NGOs per district and per type of Livelihood assistance

District	Cash for work/ Temporary Employment**			Grants** (Cash or In-Kind)			Loans from I/NGOs** (Micro & SME)			Vocational Training**			Other Training**			Other**		
	# Project	# I/NGO	# Beneficiary*	# Project	# I/NGO	# Beneficiary*	# Project	# I/NGO	# Beneficiary*	# Project	# I/NGO	# Beneficiary*	# Project	# I/NGO	# Beneficiary*	# Project	# I/NGO	# Beneficiary*
1 Ampara	41	2	32,887	60	18	22,984	7	88	7	6	681	1	1	1,142	4	3	431	
2 Batticaloa	28	11	8,486	78	18	7,888	42	6	1,191	42	6	1,191	21	11	1,142	6	6	2,300
3 Colombo	1			33	21	14,732	15	6	455	15	6	455	4	3	3,202	14	6	460
4 Galle	11	4	18,454	102	11	9,022	63	7	3,716	63	7	3,716	2	2	202	14	1	110
5 Hambantota	24	2	6,790	100	28	26,125	35	4	286	35	4	286	6	6	292	15	6	728
6 Jaffna	1			1			1			1								
7 Kilinochchi	1			1			1			1								
8 Matara	1			1			1			1								
9 Mullaithivu	1			1			1			1								
10 Puttalam	14	3	14,542	52	15	12,099	14	3	2,108	14	3	2,108	1	1	362	1	3	16,702
Total	122	33	74,970	538	119	99,396	142	40	8,707	142	40	8,707	31	20	5,207	50	29	19,895

NOTE:
 * May include direct or indirect beneficiaries
 ** Information provided by I/NGOs reached during data collection process from July to September 2005
 *** Not mutually exclusive between project categories