



International Conference on
**Migration, Remittances and Development
Nexus in South Asia**

*Crystal Room – Upper, Taj Samudra Hotel, Colombo
4-5 May, 2009*

Organized by
Institute of Policy Studies of Sri Lanka
&
Friedrich Ebert Stiftung, Colombo

**MIGRATION AND DEVELOPMENT:
The Indian (Kerala) Experience**

S Irudaya Rajan
Research Unit on International Migration
Centre for Development Studies

INTRODUCTION

- ❖ India, one of the largest manpower-exporting countries – about 10 million or 1 percent of India's population
- ❖ Half of them are in the Gulf countries
- ❖ It tops the list of recipient countries of migrant remittances with \$ 40 billion in 2008 – 3 percent of GNP

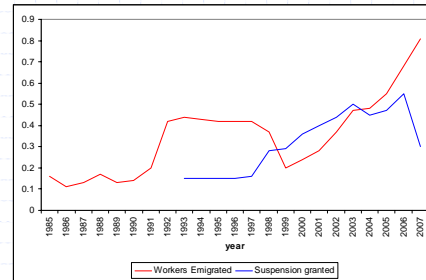
Estimates/ Guesstimates?

- ◆ Global Convention of People of Indian Origin, held in New York in 1989, puts the figure as 20 million.
- ◆ the High Level Committee on the Indian Diaspora – 2001- 'the population of Indian Diaspora is estimated to be around 20 million'
- ◆ Appendix - 133 countries – 16.9 million
- ◆ According to the Ministry of Overseas Indian Affairs (MOIA), India has the second largest diaspora in the world with 25 million in 2009

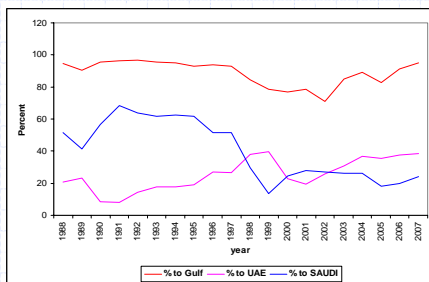
Section 22 of the The Emigration Act 1983

- ◆ "No citizen of India shall emigrate unless he obtains under this chapter from the protector of emigrants authorization in the prescribed manner"
- ◆ However, thirteen categories of persons have been exempted from this requirement (below 18 years, above 50 years, completed 10 years of schooling)
- ◆ Emigration Check Not Required (ECNR) Passport holders – "Any" country
- ◆ Emigration Check Required (ECR) passport holders – "Exempted" for ECNR countries
- ◆ ECNR countries - 174
- ◆ ECR countries – 18 countries (Gulf, Malaysia, Jordan, Libya, Iraq is banned) – Exemption Granted

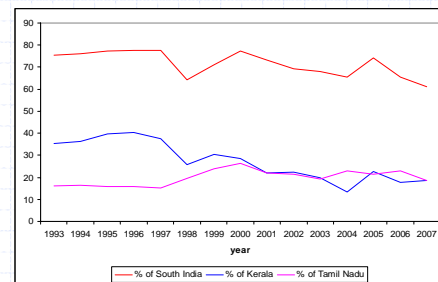
Workers Emigrated and Suspension Granted, 1985-2007 (in millions)



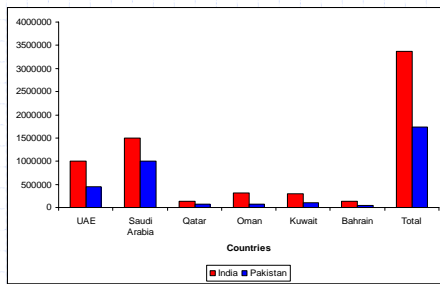
Destination of Indian Emigrants, 1988-2007 (Percent)



Emigrants by States in India, 1993-2007 (percent)



Emigrants in Gulf: India and Pakistan, 2002



Weakness of Indian Emigration Data

- ◆ Data available only for ECR countries -18
- ◆ No data available for ECNR countries
- ◆ Even for ECR countries migration for employment, no data published on the occupational profile of labourers who have left from India
- ◆ No data on return emigrants back to India from Gulf

Migration Surveys in Kerala

- Kerala Migration Survey, 1998
- Kerala Migration Survey, 2003
- Kerala Migration Survey 2007
- Kerala Migration Survey 2008
- Kerala Migration Survey 2009

Kerala Migration Surveys

- Samples from 300 Panchayats (localities) in Kerala
- Random sampling with probability proportional to the number of HH
- 50 households in 300 panchayats: 15000

Table 1: EMI, REM, NRK, 1998-2007

	EMI		REM		NRK	
	Lakhs	Per 100hh	Lakhs	Per 100 hh	Lakhs	Per 100 hh
1998	13.62	21.4	7.39	11.6	21.01	33.0
2003	18.38	26.7	8.94	13.0	27.32	39.7
2008	21.6	28.6	11.01	14.6	32.61	43.2

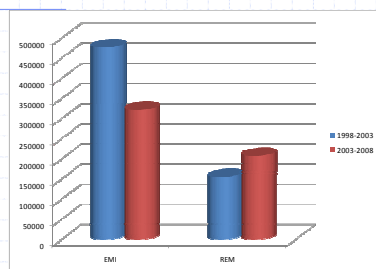
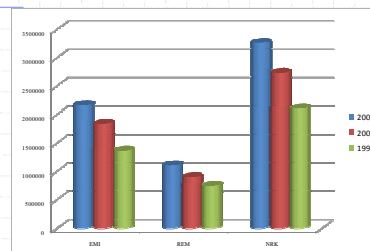


Table 2: Emigrants and Out Migrants by Religious Affiliation, 2007 (Percent of Total)

	EMI	OMI
Hindus	33.3	58.9
Christians	18.5	32.3
Muslims	48.2	8.8
Total	100.0	100.0

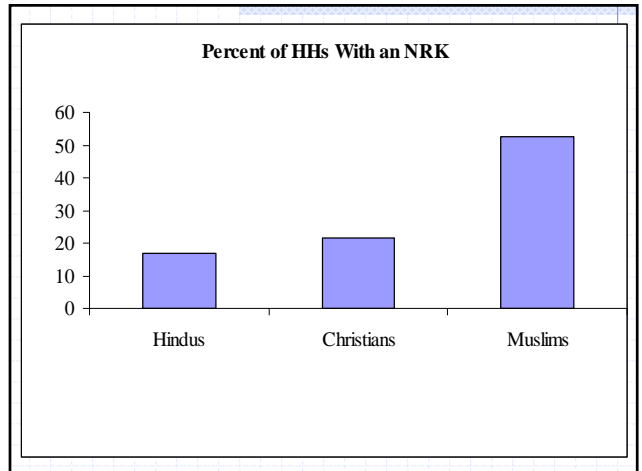
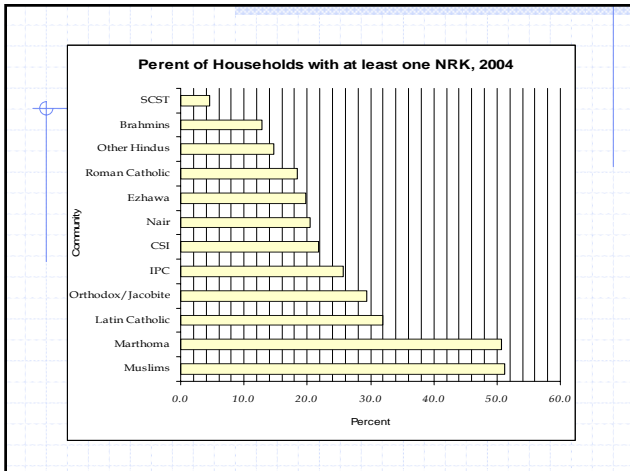
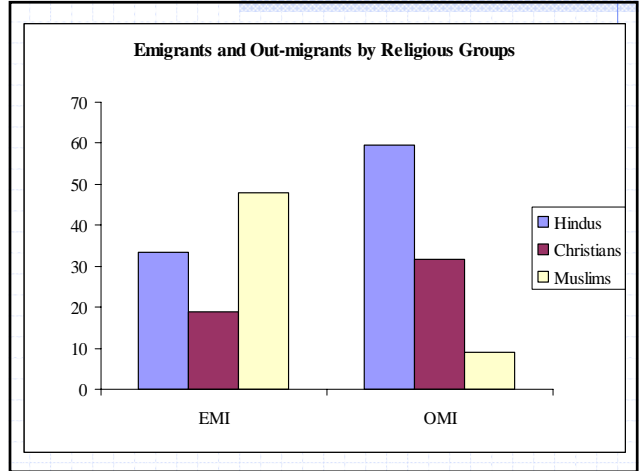
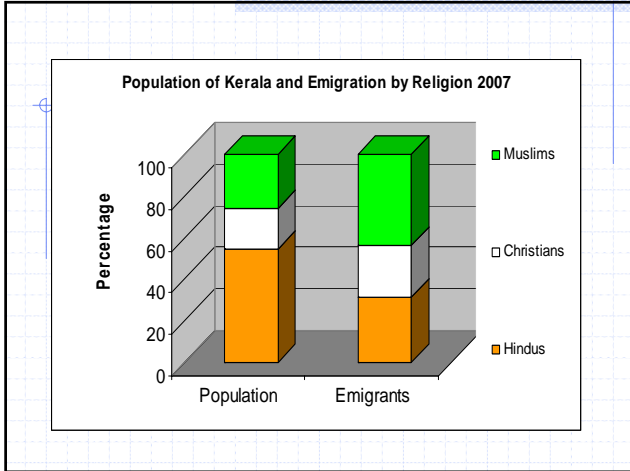
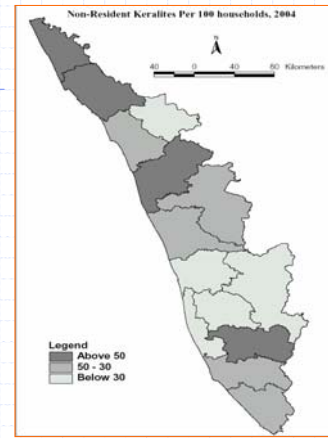
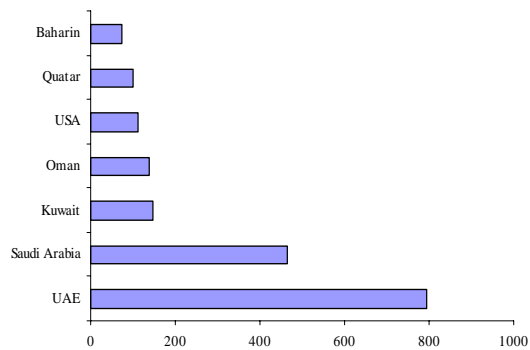


Table 3: Principal Districts of Origin of Emigrants from Kerala, 2007

	In Lakhs
Malappuram	3.36
Kannur	2.54
Thrissur	1.71
Trivandrum	1.89
TOTAL	18.47



Kerala Emigrants by Destination



Life at Gulf and Unemployment

- > Average age of Emigrants: 28
- > Average age at return: 44
- > Life in Gulf = 16 years
- > Unemployment Rate before emigration: 22.9
- > Unemployment rate after return: 2.9

Table 4: Percent of Women Among Emigrants, by Community

	% Females	
	2007	2003
Hindus	16.0	17.2
Christians	28.4	32.1
Muslims	8.0	8.0
Total	14.4	16.8

Female Migration

- > Proportion of never married: 17 percent in 1998, 25 percent in 2003 and 40 percent in 2007
- > Qualified women such as nurse migration is on the increase
- > 33 percent of females were degree holders at the time of emigration compared to just 14 percent for men

Table 5: "Gulf Wives" By religious Groups (As percentage of)

	Number (in 1000s)	Percent	Married Women
Hindus	366	29.9	5.6
Christians	118	9.6	5.3
Muslims	739	60.5	22.9
Total	1223	100.0	10.2

Percent of "Gulf Wives" by Community

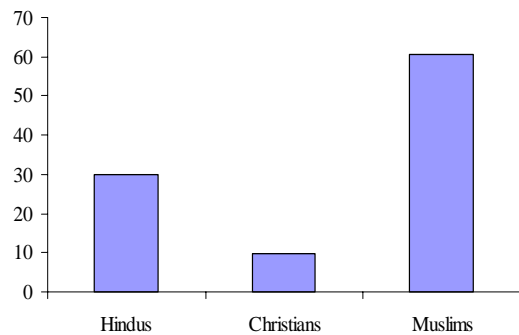


Table 6: Total Workers Remittances to Kerala

Year	(In 1000s of Crores)
1998	13.65
2003	18.465
2008	31.222

Percent Distribution Remittances by Religious Groups

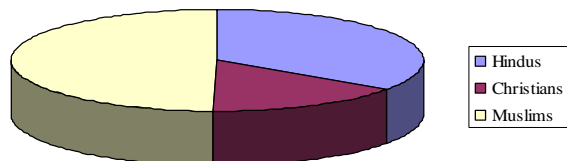
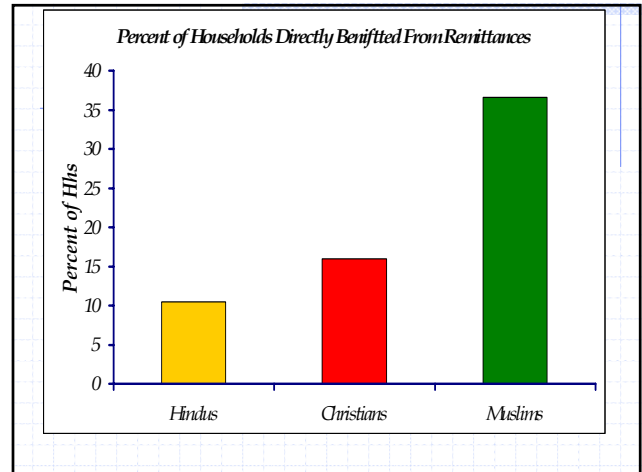
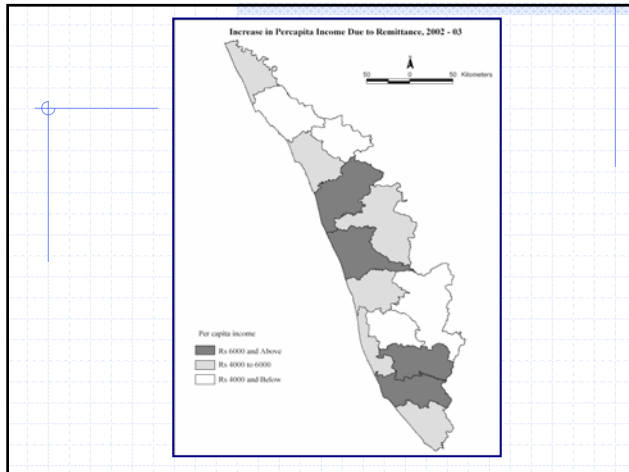


Table 7: Impact of Remittances on NSDP

	NSDP	Remittances	Remittances as % of NSDP
2007	121410	24.524	20.2
2003	83783	18.465	22.0
1998	53552	13.652	25.5

Impact on Remittances

- Remittances - 1.28 times more than the government revenue receipt
- Remittances - 4 times more than the transfers from the central government
- Remittances - 1.5 times more than the government expenditure
- Remittances - 15 and 18 times more than the receipts from cashew, marine products



Migrant and Development

- ◆ Impact on Poverty
- ◆ Impact on Employment and Unemployment
- ◆ Impact on Standard of living – Ownership of houses, quality of houses, LPG connection, consumer durables
- ◆ Income redistribution and social mobility

Social Consequences

- ◆ Women left behind
- ◆ Elderly Left behind
- ◆ Children left behind – Living with mother alone, living with grandparents, living with other relatives and living in boarding schools

Maturity in Migration

- Third wave of emigration (stability in emigration partly contributed age structural transition)
- Halt in internal migration (from Kerala)
- Remittances still on (being leader in the Gulf emigration, able to bargain for better wages, Tamil Nadu, Andhra Pradesh, Karnataka and Gujarat also taking part in large way in Gulf)

THANK YOU